

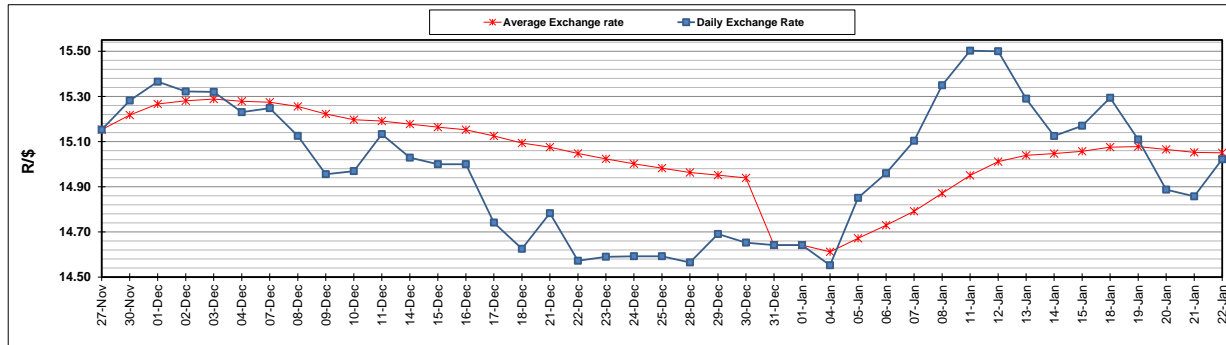
	PETROL 95 ULP	PETROL 93 ULP & LRP	DIESEL 0.05%	DIESEL 0.005%	ILL. PAR.
GAUTENG PUMP PRICE (SA c/l) AS FROM 06/01/2021	1,486.000	1,469.000	-	-	-
WHOLESALE PRICE (SA c/l) AS FROM 06/01/2021	-	-	1,301.420	1,301.820	739.688
SINGLE NATIONAL MAXIMUM RETAIL PRICE	-	-	-	-	930.000
BASIC FUEL PRICE - 22/01/2021 (SA c/l)	597.786	592.290	586.495	589.190	572.877
PRESS RELEASE CONTRIBUTION TO BFP 06/01/2021 - 22/01/2021 (SA c/l)	519.170	512.170	541.630	543.030	527.128
UNIT OVER/(UNDER) RECOVERY - 22/01/2021 (SA c/l)	(78.616)	(80.120)	(44.865)	(46.160)	(45.749)
AVERAGE BASIC FUEL PRICE 31/12/2020 - 22/01/2021	589.276	582.269	587.053	588.963	574.815
AVERAGE UNIT OVER/(UNDER) RECOVERY 31/12/2020 - 22/01/2021	(79.518)	(80.217)	(58.364)	(58.639)	(60.628)

ANALYSIS MOVEMENT OF AVERAGE OVER/(UNDER) RECOVERY

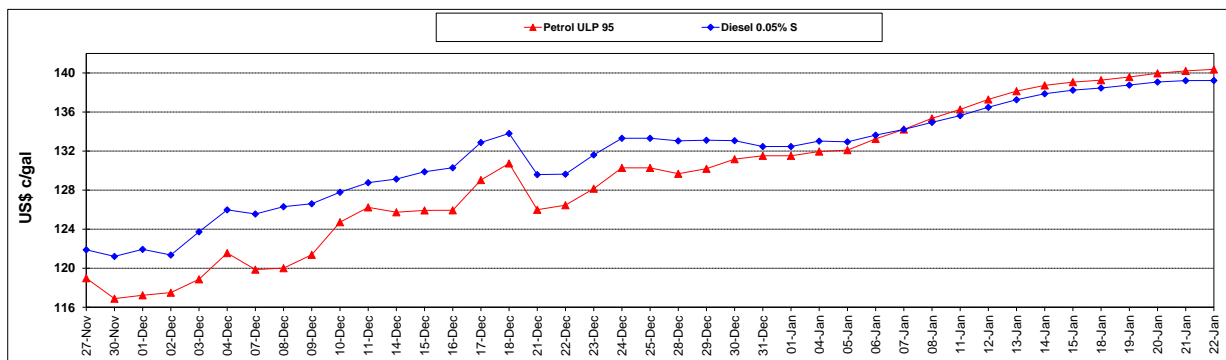
	PETROL 95	PETROL 93	DIESEL 0.05%	DIESEL 0.005%	ILL. PAR.
- MOVEMENT IN INTERNATIONAL PRODUCT PRICES	(75.160)	(75.911)	(54.023)	(54.284)	(56.377)
- MOVEMENT IN EXCHANGE RATE	(4.358)	(4.306)	(4.341)	(4.355)	(4.251)
AVERAGE UNIT OVER/(UNDER) RECOVERY 31/12/2020 - 22/01/2021	(79.518)	(80.217)	(58.365)	(58.638)	(60.628)

R/\$ EXCHANGE RATE - (R/\$15.0218 - 22/01/2021)

EXCHANGE RATE USED IN BASIC FUEL PRICE



INTERNATIONAL PRODUCT PRICES OF BASKET USED IN BASIC FUEL PRICE



BASIC FUEL PRICE IN SA CENTS PER LITRE

